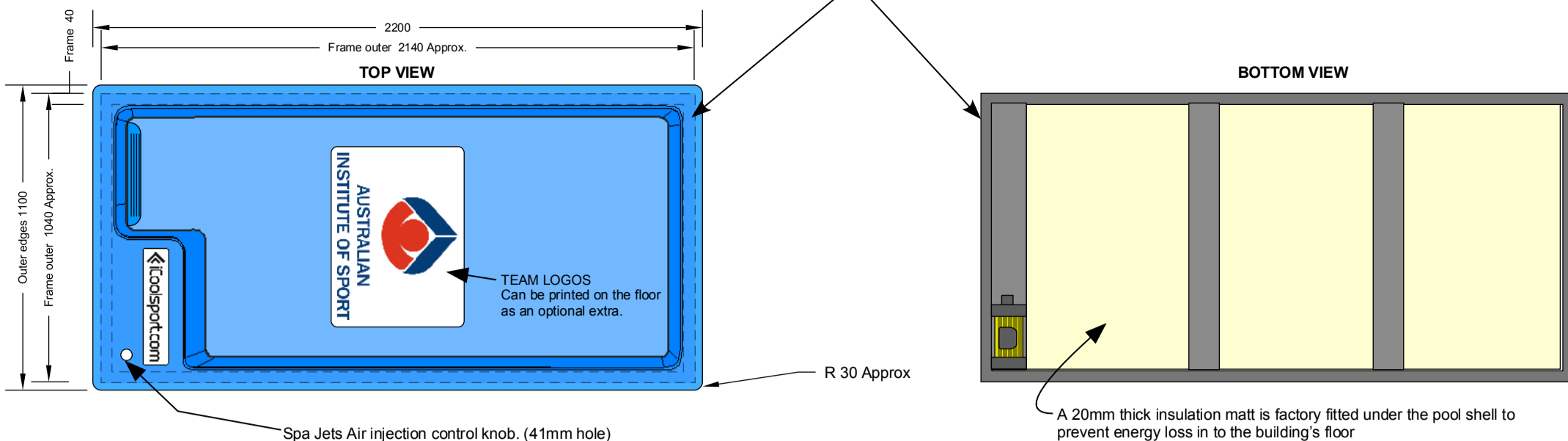
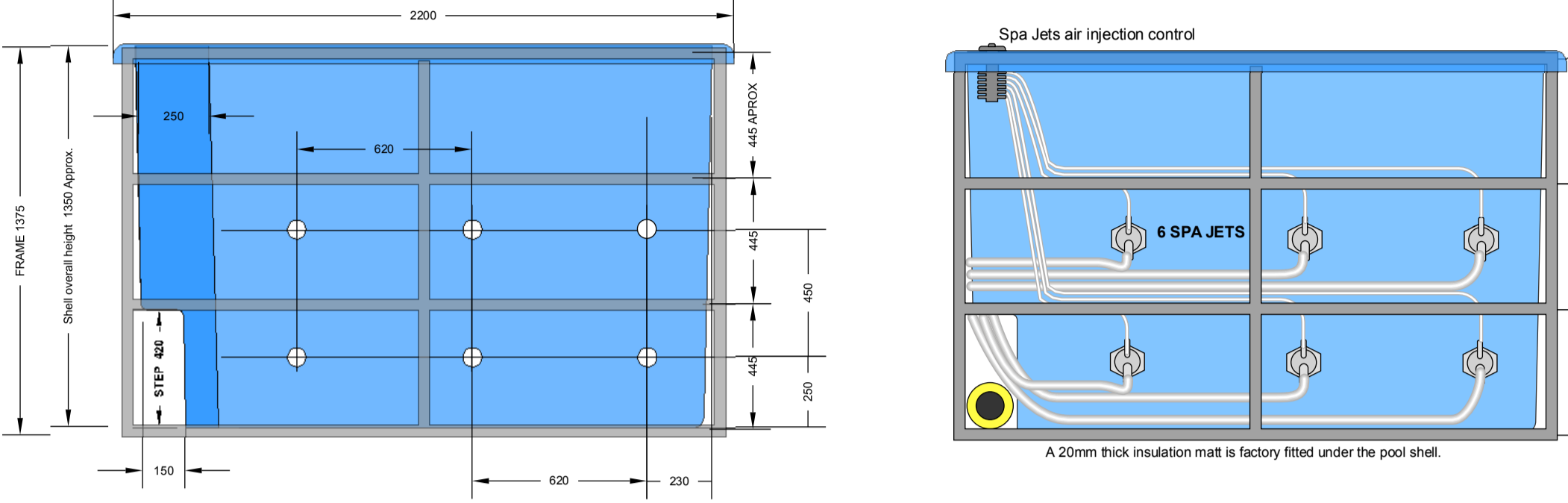


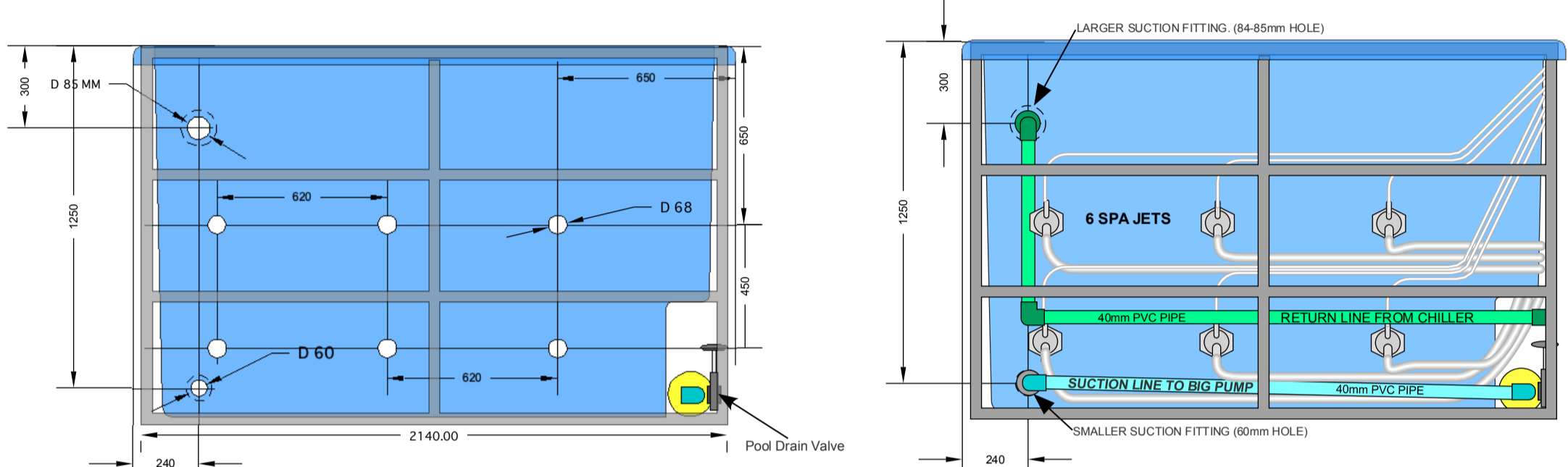
The Pool is fully self supported in a marine grade Stainless Steel frame.



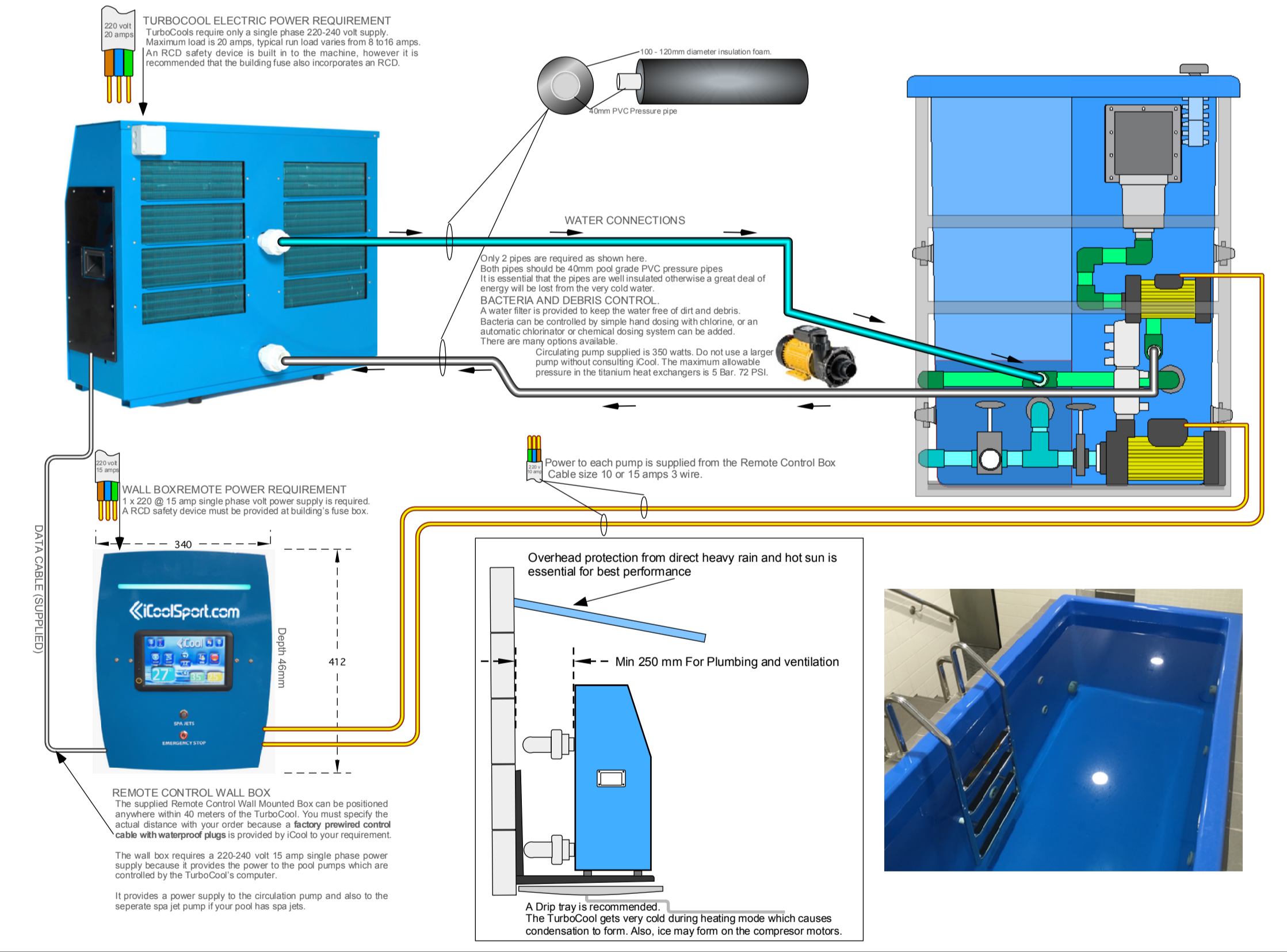
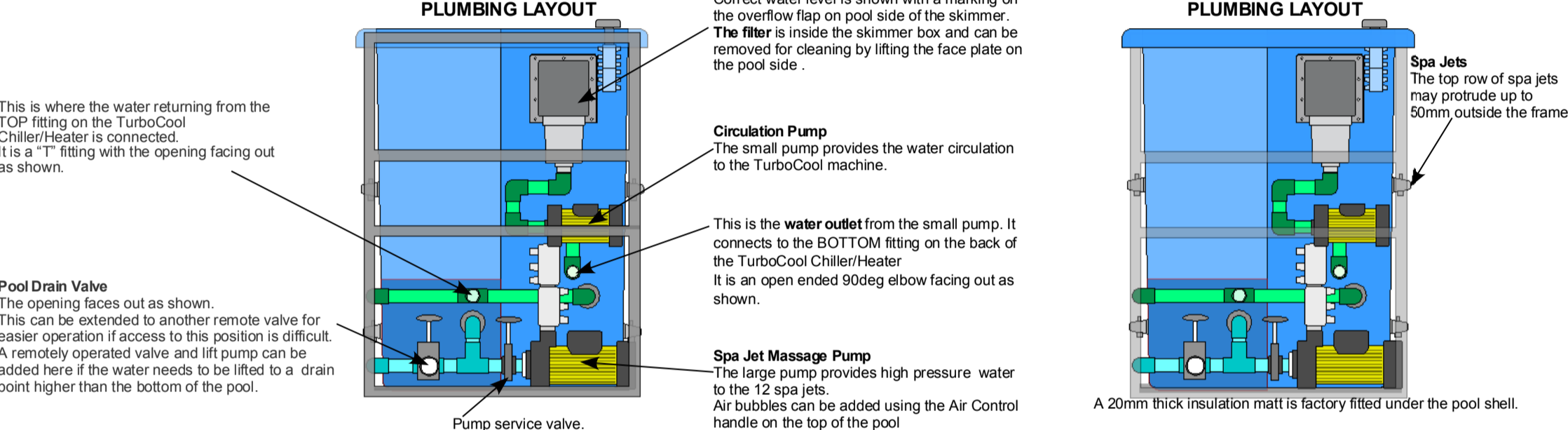
RIGHT HAND SIDE LOOKING FROM PUMP END.



LEFT HAND SIDE LOOKING FROM PUMP END



**MACHINERY END CONNECTIONS.**



**The 2019 TurboCool**

**BASIC INFORMATION:**  
The iCool TurboCool range is the only product available that was designed from the beginning specifically for the efficient automatic chilling or heating and management of large ice baths.

**YEARS OF EXPERIENCE**  
TurboCools are now the world standard for commercial ice baths and are installed in stadiums, clubs and sporting facilities all over the world.

**CLASS LEADING POWER TO WEIGHT AND SIZE.**  
The 2019 iCool TurboCools produce an extremely impressive chilling and heating performance of 15,800 of heat pumping from a compact easy to install package that takes up much less space and weighs a lot less than any comparable machine, allowing for ceiling, wall or floor mounting even in confined spaces.

**SIMPLE LOW COST INSTALLATION.**  
Requires only standard single phase power, one flow and one return water pipe and a data cable (supplied) to connect the attractive wall mounted remote control box.

**MAXIMUM INSTALLATION FLEXIBILITY.**  
The TurboCool can be mounted anywhere within 70 meters (230 ft) of your pool and can be either level with the pool or up to 12 meters (40 ft) above or below the pool.

**LOWEST POSSIBLE OPERATING COST.**  
The TurboCool has a sophisticated computer control system that senses and manages all parameters necessary to reduce electric power consumption to the minimum possible while still maintaining your set temperature accurately.

**OPERATION CAN CONTINUE EVEN IF A FAULT OCCURS.**  
The TurboCool is the only machine of its kind that can prevent recovery pool down time. This is because each TurboCool is actually 2 completely independent heat pumps in the single cabinet. In the unlikely event of a component fault in one heat pump the second heat pump can continue to chill or heat your pool effectively until the fault is diagnosed.

**WALL MOUNTED REMOTE CONTROL**  
An attractive wall mounted remote control box with large colour touch screen controls all functions and settings and provides complete information on temperatures, modes of operation and diagnostics. A session timer is also included.

**Empty Weight 98Kg.**

**Key Features:**

- Weather proof power connection box. Requires only low cost single phase power.
- Cabinet is constructed from high quality marine grade aluminium to prevent rust and save weight. All metal parts are coated with high grade heat cured epoxy paint to resist extreme conditions.
- Built in strong lifting handles for ease of placement.
- All electronics and electrical components are protected in a sealed in a separate metal box and easily accessed behind this smoked glass cover.
- Strong mounting bars with slots to fit the standard floor mounting vibration damping rubber feet. The bars also have slots for wall or ceiling mounting hardware.
- Industry standard quick connection port to return chilled or heated water to the pool.
- Industry standard quick connection port to collect water from the pool for chilling or heating.

**Dimensions:** 1050 (width), 850 (height), 348 (depth).